



HYDROSERVICE
engineering & systems

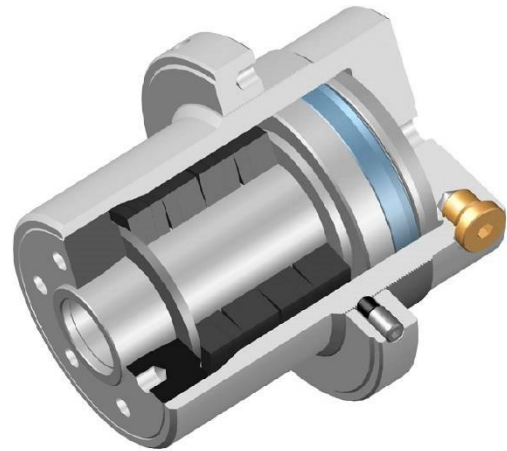
SPRING CLAMPING CYLINDERS



APPLICATIONS

Universal spring clamping cylinder to be used to clamp mobile components of equipment such as:

- Machine tools
- Servo-locking tools
- Saddles
- Pallets
- Tailstocks
- Work pieces
- Tools
- Die-locking presses



ADVANTAGES

- 10 possibilities to select the clamping force
 - Clamping through Belleville washers
 - Reduce manufacturing size
 - Piston with anti-rotation device
 - Axial and radial oil feeding through air bleeds
- Hardened and ground disks for a reduced friction on springs
 - Easy assembly and calibration

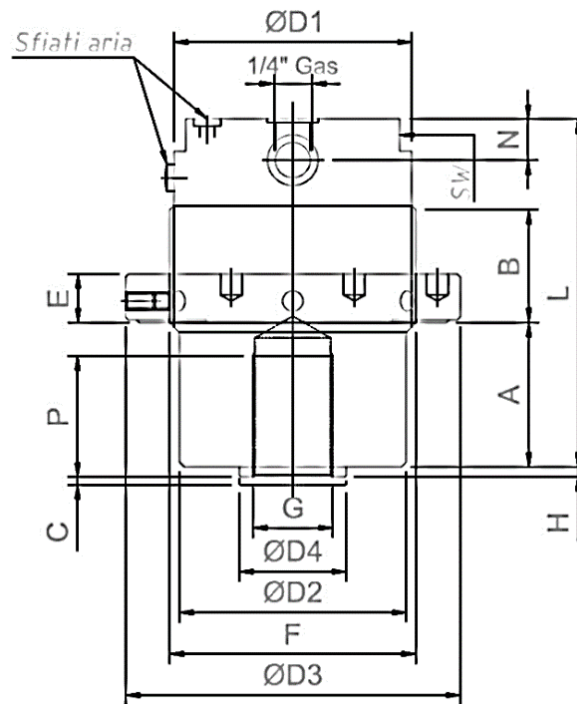


TECHNICAL FEATURES

HYDRAULIC FLUID	Mineral oil
FLUID VISCOSITY	10÷ 400 cSt
RECCOMANDED VISCOSITY	32÷68 cSt
REMPERATURE RANGE	-20°C +80°C
MAX WOORKING PRESSURE	(see technical features table)

TECHNICAL FEATURES "CBM" SERIES

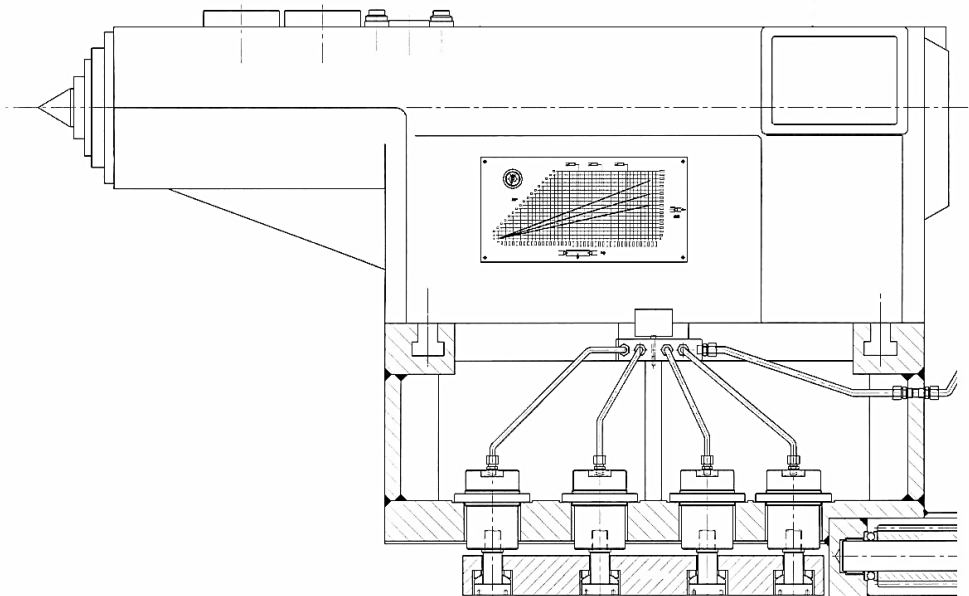
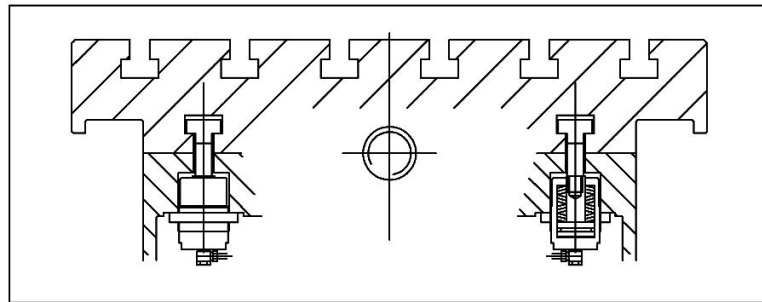
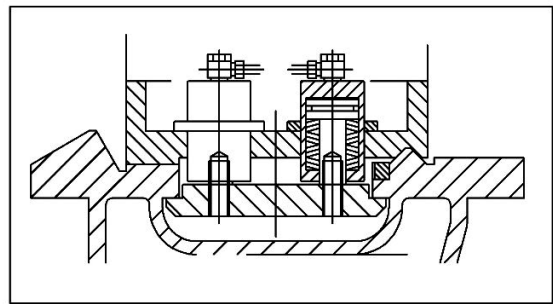
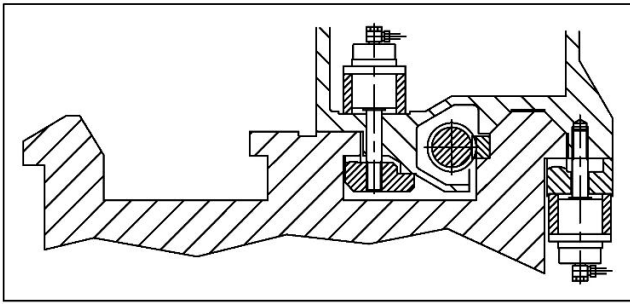
CBM Type CODE	Clampng force kN	Adjusting pressure BAR	Release pressure at stroke C=0,5 mm	Release pressure at stroke C=1 mm	Volume (stroke 1mm) cm ³	Weight kg
0070-000-001-01	16	130	160	200	1,4	2
0070-000-002-01	25	130	160	180	2	2,7
0070-000-003-01	40	150	170	190	2,9	4
0070-000-004-01	65	175	210	230	3,9	6
0070-000-005-01	100	210	240	270	5	8
0070-000-006-01	125	180	210	240	7,5	16
0070-000-007-01	160	200	230	270	9,5	20
Contact us	200	210	240	270	12	26
Contact us	250	190	210	230	15,5	40
Contact us	350	190	210	230	20,5	60



DIMENSIONS (mm)

CODE	TYPE	Amin.	Amax	B	ØD ₁	ØD ₂	ØD ₃	ØD ₄	E	F	G	H	L	N	P	SW
0070-000-001-01	CBM-16	45	53	22	55	55	85	20	14	M58x1,5	M14x1,5	4	97	11	24	50
0070-000-002-01	CBM-25	45	58	27	65	65	95	25	14	M68x1,5	M18x1,5	4	103	11	30	60
0070-000-003-01	CBM-40	53	70	32	75	75	110	30	15	M78x1,5	M22x1,5	4	118	12	36	70
0070-000-004-01	CBM-65	63	78	33	89	85	125	40	18	M92x1,5	M30x1,5	6	130	12	45	80
0070-000-005-01	CBM-100	73	93	38	99	95	140	40	18	M102x1,5	M30x1,5	5,5	145	12	45	90
0070-000-006-01	CBM-125	70	90	42	127	127	170	50	22	M130x1,5	M38x1,5	6	165	15	50	120
0070-000-007-01	CBM-160	70	100	55	142	142	180	50	30	M140x1,5	M38x1,5	6	172	15	50	130
Contact us	CBM-200	100	130	70	150	150	190	57	40	M148x1,5	M45x1,5	6	198	25	60	-
Contact us	CBM-250	100	130	70	170	170	220	70	40	M168x1,5	M45x1,5	6	228	25	60	-
Contact us	CBM-350	105	135	80	200	200	250	80	45	M198x1,5	M52x1,5	6	238	35	70	-

APPLICATIONS EXAMPLE



INDICATION FOR FITTING AND USE

- Position the cylinder and the tie-rod in the assembly seat having care to lock the thread with the suitable paste.
- Feed the cylinder with the feeding pressure.
- Reduce the clearance with the ring nut assuring the position with the locking screw.
- Discharge the registering pressure to clamp.
- Feed the cylinder with the stroke pressure to unclamp.
- Check the setting of the clamping point after about 500 cycles registering the ring nut again through the registration pressure.

HYDROSERVICE S.p.A.

Via Gorizia 121, 21013 - Gallarate (VA) ITALY

Phone: (+39) 0331 15231

www.hydroservice.it - hydroservice@hydroservice.it