



HYDROSERVICE
engineering & systems

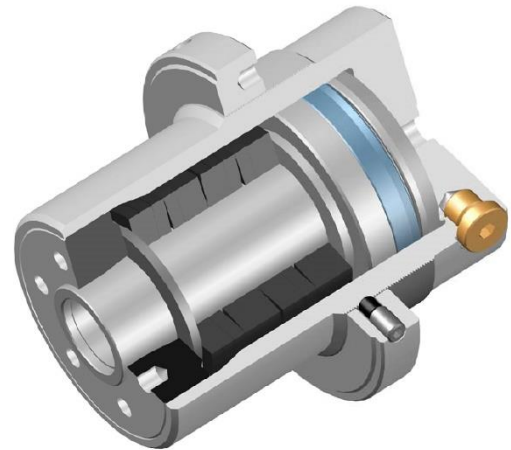
SPRING CLAMPING CYLINDERS



APPLICATIONS

Universal spring clamping cylinder to be used to clamp mobile components of equipment such as:

- Machine tools
- Servo-locking tools
- Saddles
- Pallets
- Tailstocks
- Work pieces
- Tools
- Die-locking presses



ADVANTAGES

- 10 possibilities to select the clamping force
 - Clamping through Belleville washers
 - Reduce manufacturing size
 - Piston with anti-rotation device
 - Axial and radial feeding through air bleeds
- Hardened and ground disks for a reduced friction on springs
 - Easy assembly and calibration

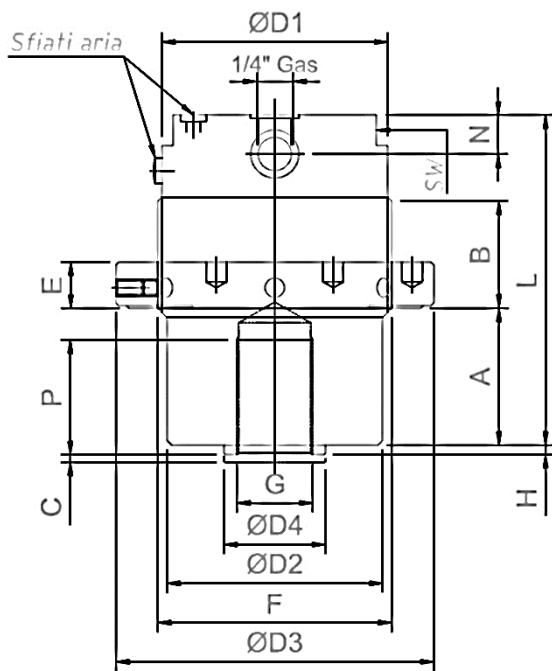


TECNICAL FEATURES

HYDRAULIC FLUID	Mineral oil
FLUID VISCOSITY	10÷ 400 cSt
RECCOMANDED VISCOSITY	32÷68 cSt
REMPERATURE RANGE	-20°C +80°C
MAX WOORKING PRESSURE	(see technical features table)

TECHNICAL FEATURES "CBM" SERIES

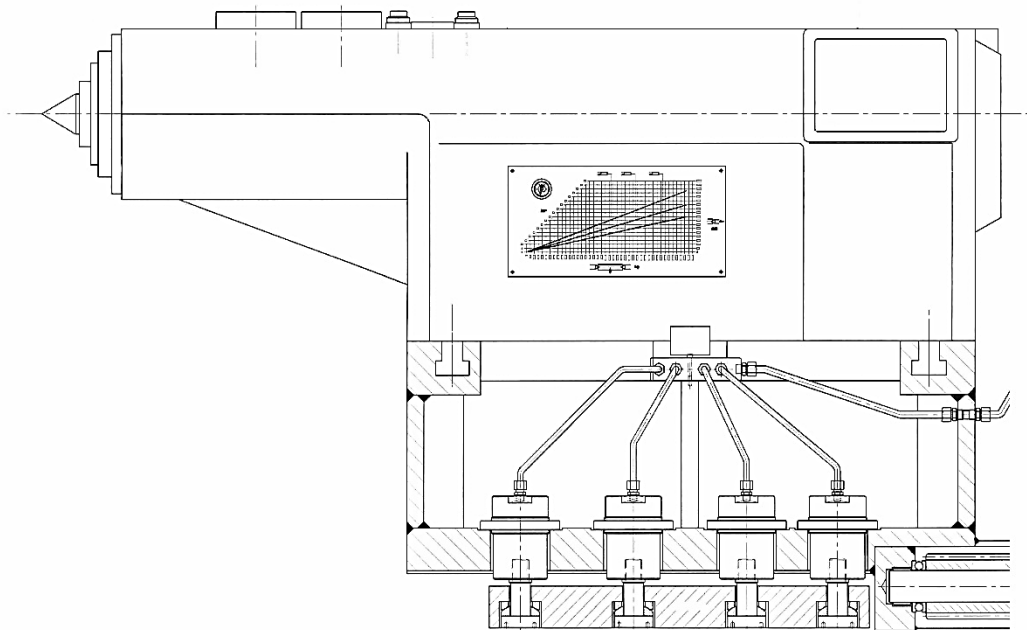
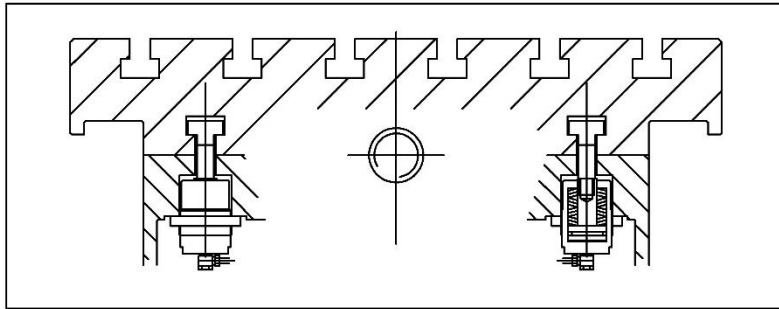
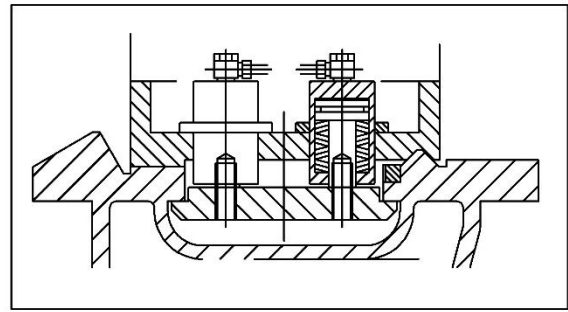
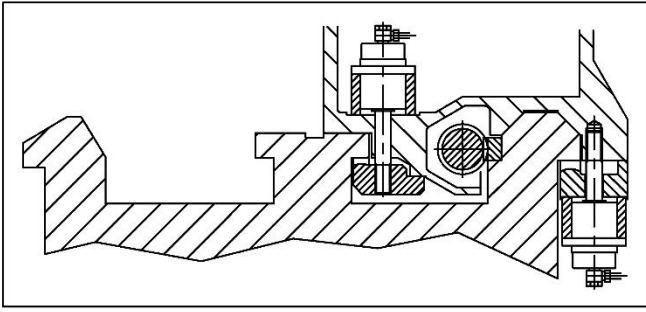
CBM Type CODE	Clampng force kN	Adjusting pressure BAR	Release pressure at stroke C=0,5 mm	Release pressure at stroke C=1 mm	Volume (stroke 1mm) cm ³	Weight kg
1017621	16	130	160	200	1,4	2
1014813	25	130	160	180	2	2,7
2242040084050	40	150	170	190	2,9	4
2242065084060	65	175	210	230	3,9	6
1001554	100	210	240	270	5	8
2242125084080	125	180	210	240	7,5	16
2242160084090	160	200	230	270	9,5	20
2242200084160	200	210	240	270	12	26
2242250084170	250	190	210	230	15,5	40
2242350084180	350	190	210	230	20,5	60



DIMENSIONS (mm)

CODE	TYPE	A min.	A max	B	ØD1	ØD2	ØD3	ØD4	E	F	G	H	L	N	P	SW
1017621	CBM-16	45	53	22	55	55	85	20	14	M 58x1,5	M 14x1,5	4	97	11	24	50
1014813	CBM-25	45	58	27	65	65	95	25	14	M 68x1,5	M 18x1,5	4	103	11	30	60
2242040084050	CBM-40	53	70	32	75	75	110	30	15	M 78x1,5	M 22x1,5	4	118	12	36	70
1001553	CBM-65	63	78	33	89	85	125	40	18	M 92x1,5	M 30x1,5	6	130	12	45	80
1001554	CBM-100	73	93	38	99	95	140	40	18	M 102x1,5	M 30x1,5	5,5	145	12	45	90
2242125084080	CBM-125	70	90	42	127	127	170	50	22	M 130x1,5	M 38x1,5	6	165	15	50	120
2242160084090	CBM-160	70	100	55	142	142	180	50	30	M 140x1,5	M 38x1,5	6	172	15	50	130
2242200084160	CBM-200	100	130	70	150	150	190	57	40	M 148x1,5	M 45x1,5	6	198	25	60	-
2242250084170	CBM-250	100	130	70	170	170	220	70	40	M 168x1,5	M 45x1,5	6	228	25	60	-
2242350084180	CBM-350	105	135	80	200	200	250	80	45	M 198x1,5	M 52x1,5	6	238	35	70	-

APPLICATIONS EXAMPLE



INDICATION FOR FITTING AND USE

- Position the cylinder and the tie-rod in the assembly seat having care to lock the thread with the suitable paste.
- Feed the cylinder with the feeding pressure.
- Reduce the clearance with the ring nut assuring the position with the locking screw.
- Discharge the registering pressure to clamp.
- Feed the cylinder with the stroke pressure to unclamp.
- Check the setting of the clamping point after about 500 cycles registering the ring nut again through the registration pressure.

HYDROSERVICE S.p.A.

Via Gorizia 121, 21013 - Gallarate (VA) ITALY

Phone: (+39) 0331 15231

www.hydroservice.it - reception@hydroservice.it